



AIS RESOURCES

Copper-Gold-Antimony

**Developing the St. John Project
New Brunswick, Canada
Q2 – 2026**

TSX.V: AIS | OTCQB: AISSF | FRA: 5YH

www.aisresources.com

Information set forth in this presentation contains forward-looking statements that are based on assumptions as of the date of this presentation. These statements reflect management's current estimates, beliefs, intentions and expectations. They are not guarantees of future performance. A.I.S Resources Ltd. ("AIS") cautions that all forward looking statements are inherently uncertain and that actual performance may be affected by a number of material factors, many of which are beyond AIS's control. Such factors include, among other things: risks and uncertainties relating to metal prices, changes in planned work resulting from weather, logical, technical or other factors, the possibility that results of work will not fulfill expectations and realize the perceived potential of AIS's mineral properties, uncertainties involved in the interpretation of drilling results and other tests, the possibility that required permits may not be obtained in a timely manner or at all, risk of accidents, equipment breakdowns or other unanticipated difficulties or interruptions, the possibility of cost overruns or unanticipated expenses in work programs, the risk of environmental contamination or damage resulting from the exploration operations, the need to comply with environmental and governmental regulations and the lack of availability of necessary capital, which may not be available to AIS on terms acceptable to it or at all. AIS is subject to the specific risks inherent in the mining business as well as general economic and business conditions. Accordingly, actual and future events, conditions and results may differ materially from the estimates, beliefs, intentions and expectations expressed or implied in the forward looking information. Except as required under applicable securities legislation, AIS undertakes no obligation to publicly update or revise forward-looking information. AIS does not intend, and does not assume any obligation, to update these forward-looking statements, except as required under applicable securities legislation. For more information on AIS, readers should refer to www.sedar.com for AIS's filings with the Canadian securities regulatory authorities and our website www.aisresources.com

A large, rugged rock face with two people at the base for scale. The rock is dark brown and reddish, with many cracks and ledges. Two people are standing at the bottom of the rock face, one on the left and one on the right, providing a sense of scale. The person on the left is wearing a light-colored shirt and dark pants, and the person on the right is wearing a dark shirt and blue jeans. The rock face is the main focus of the image, with the people at the bottom. The text is overlaid on a semi-transparent dark rectangle in the center of the image.

ST. JOHN PROJECT

District-scale Potential: over ~25 km prospective corridor for Sb, Cu, Au, Ag, Mo and Re – project area of 101km²

A New Discovery Opportunity in a Proven Mining Jurisdiction

AIS Resources' **St. John Project**, in partnership with **Riversgold Ltd.**, represents an early-stage but district-scale exploration opportunity in southern New Brunswick — one of Canada's most accessible and mining-friendly regions. The 101 km² project covers a 25 km prospective



corridor located just 20 km west of Saint John and 50 km from the U.S. border, with **excellent infrastructure** including highways, rail, a deep-water port, power, and skilled labour.

High-Grade Surface Results and IOCG Potential

Early exploration has confirmed **high-grade copper, gold, silver, and antimony** mineralisation across multiple prospects. At **Little Lepreau**, samples returned gold up to 41.6 g/t, silver 1,600 g/t, and copper 7.64%. **Prince of Wales** delivered copper up to 10.55% and gold 11.4 g/t. These results, coupled with **drone magnetics** showing distinct magnetic-low anomalies, indicate a strong potential for **iron-oxide-copper-gold (IOCG)** style systems.

Focused Work Program and Investment Upside

AIS can earn up to **75% ownership** through staged exploration expenditures while Riversgold retains a 25% free-carried interest to decision-to-mine. Upcoming programs include **MobileMT + IP surveys** (budget ~CAD \$300 k) and a **2,000 m maiden RC/DD drill program** targeting high-grade zones at Little Lepreau.

For investors, the Saint John Project offers a compelling mix: **district-scale upside, multi-metal exposure** (copper, gold, silver, antimony), and **low-cost exploration** in a safe, infrastructure-rich jurisdiction — all aligned with global demand for energy-transition and critical minerals.

St. John Project – Location and Overview

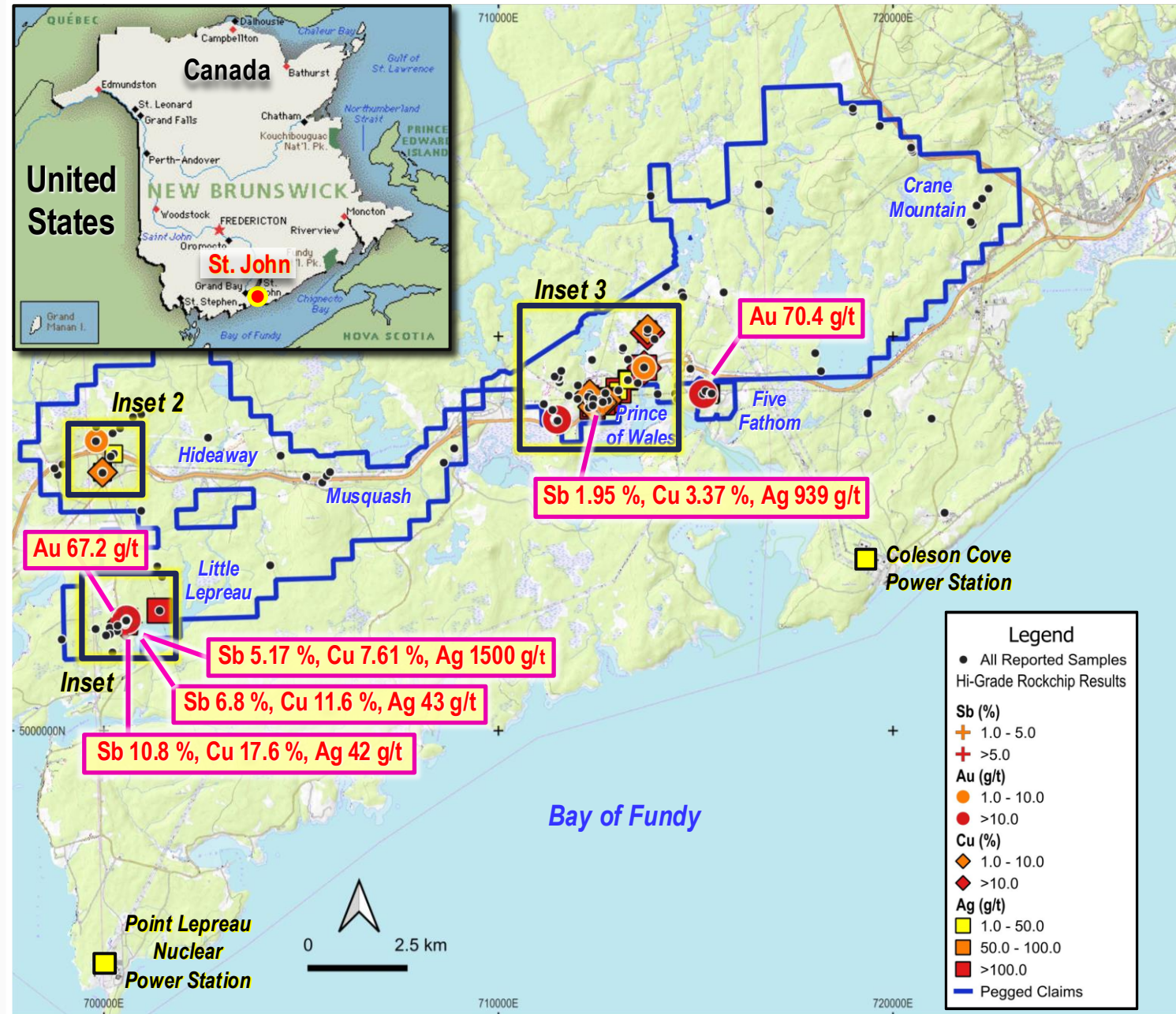
TSX-V: AIS
OTCQB: AISSF
FRA: 5YH

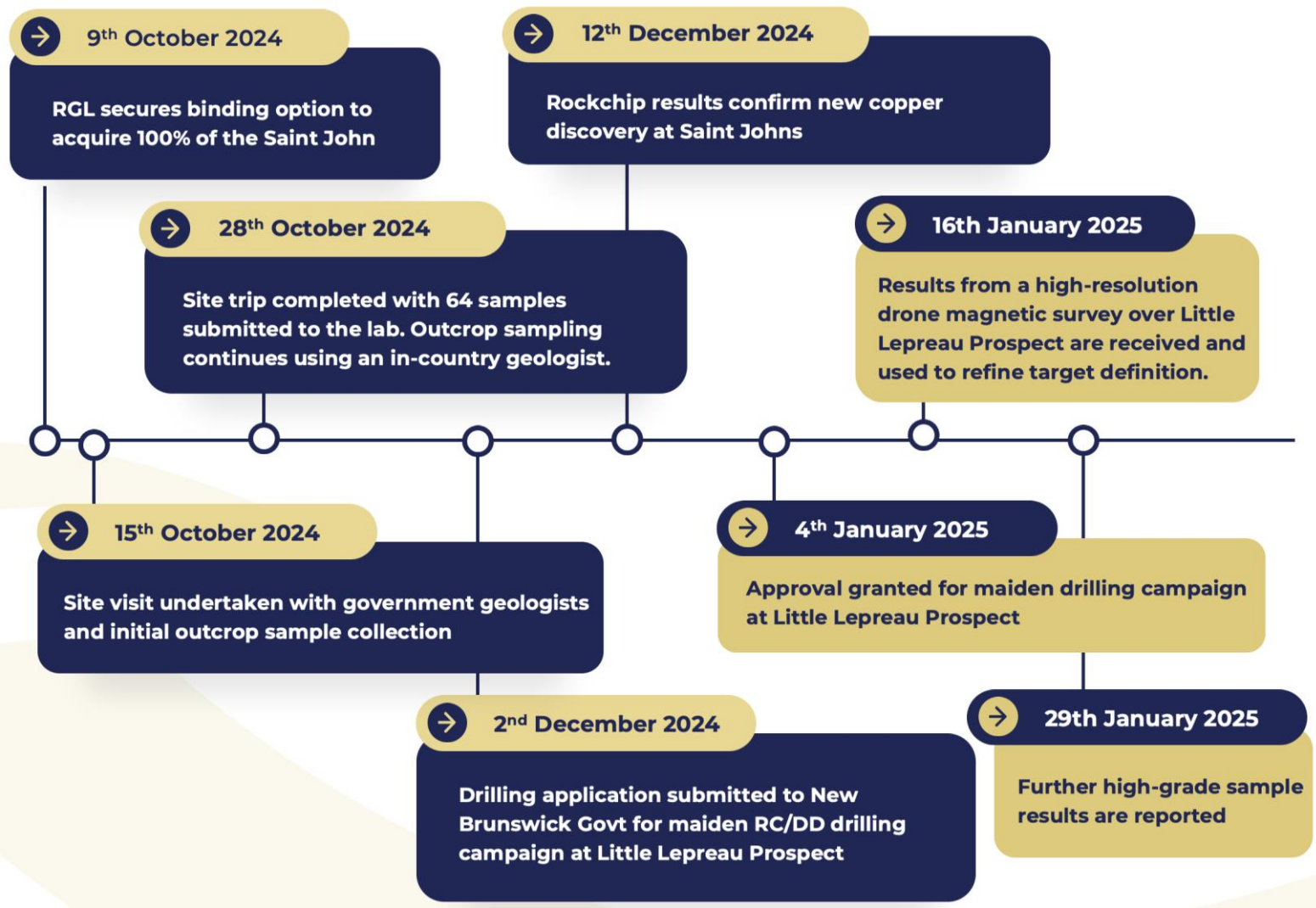
Mining Friendly Government

- Competitive royalties & tax rates
- Low-cost drilling & operating expenses
- Small communities & skilled workforce
- Excellent Infrastructure including provincial highways, railroads and electrical grid
- Located ~20km from Saint John, 2nd largest city in New Brunswick and along Trans-Canada Hwy 1
- Deep water port at Saint John
- Two airports (1 international)

Total Project Area 101 km²

- Antimony (USD/t) \$49,000
- Gold (USD/oz) \$ 4,100
- Copper (USD/t) \$9,600
- Silver (USD/oz) \$34.50





→ 12th December 2024 Significant Results

At Little Lepreau Prospect, significant rock chip results include:

- ✓ 5.58% Cu, >1% Sb, 0.53g/t Au, 1600g/t Ag
- ✓ 7.64% Cu, >1% Sb, 0.45g/t Au, 1490g/t Ag

At Prince of Wales Prospect, significant rock chip results include:

- ✓ 5.85% Cu, 32.7g/t Ag
- ✓ 10.15% Cu, 65.8g/t Ag
- ✓ 10.55% Cu, 9.5g/t Au, 477g/t Ag, 6.03%
- ✓ 2.31% Cu, 1.54g/t Au, 181g/t Ag, 11.2% Pb
- ✓ 1.16% Cu, Sb >1%, 111g/t Ag, 18.85% Pb
- ✓ 3.79% Cu, 0.76g/t Au, 1050g/t Ag
- ✓ 1.35% Cu, 11.4g/t Au
- ✓ 1.06% Cu, 77.8g/t Ag, 5.55% Pb

At Hideaway Prospect, significant rock chip results include:

- ✓ 1.54% Cu
- ✓ 2.01% Cu

→ 7th January 2025 Significant Results

At Prince of Wales Prospect, significant rock chip results include:

- ✓ 7.38% Cu, 2.38g/t Au, 148g/t Ag, 1.54% Pb
- ✓ 109g/t Ag, 6.16% Pb
- ✓ 6.23g/t Ag (RGLSJ24_064)
- ✓ 1.78g/t Ag (RGLSJ24_062)
- ✓ 48.5g/t Ag (RGLSJ24_027)

At Hideaway Prospect, significant rock chip results include:

- ✓ 1.43% Cu, 8.05g/t Ag (RGLSJ24_039)
- ✓ 1.70g/t Au (RGLSJ24_022)
- ✓ 1.40g/t Au (RGLSJ24_020)

At Little Lepreau Prospect, significant rock chip results include:

- ✓ 0.27% Cu, 0.15% Sb, 46.7g/t Ag

→ 29th January 2025 Significant Results

At Little Lepreau Prospect, significant rock chip results include:

- ✓ 41.6g/t Au, 26.8g/t Ag
- ✓ 1.99g/t Au, 6.81g/t Ag

At Prince of Wales Prospect, significant rock chip results include:

- ✓ 8.99% Cu, 42.6g/t Ag
- ✓ 133g/t Ag
- ✓ 240g/t Ag
- ✓ 140g/t Ag

At Hideaway Prospect, significant rock chip results include:

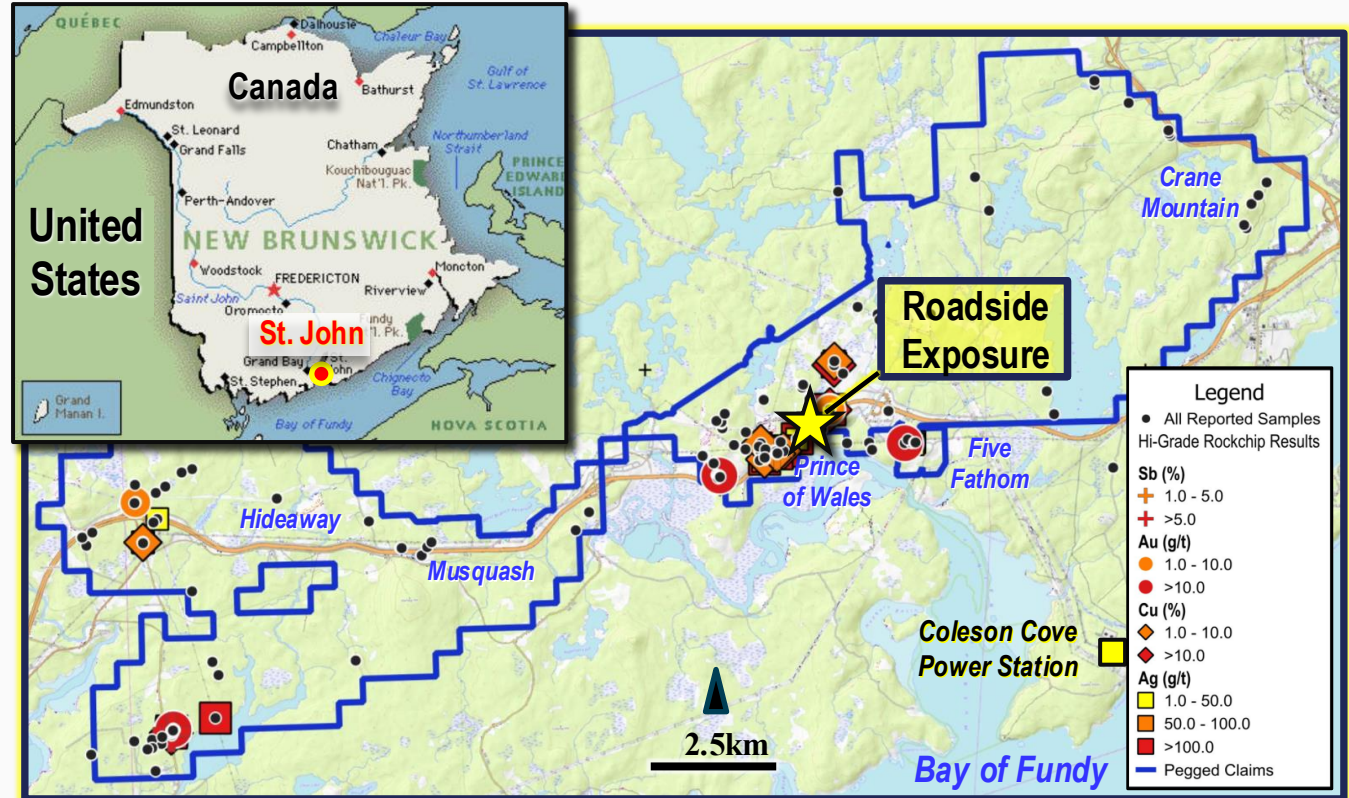
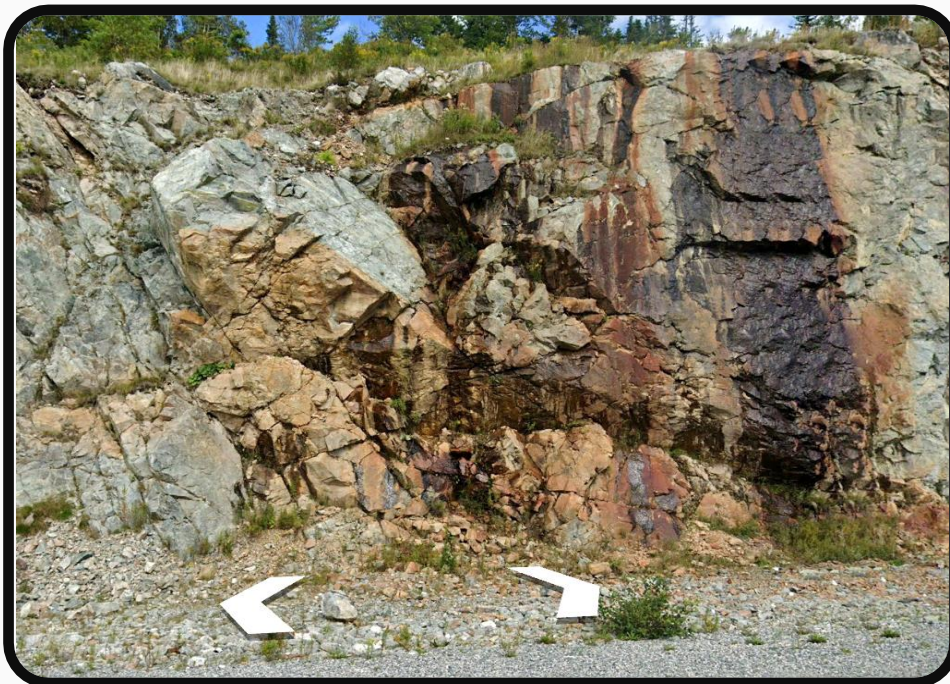
- ✓ 1.61% Cu, 5.31g/t Ag
- ✓ 1.74% Cu, 3.38g/t Ag



St. John Project – Previous Exploration

TSX-V: AIS
OTCQB: AISSF
FRA: 5YH

- Fault zone with quartz veining in Vinegar Hill/Prince of Wales area
- Reported as having chalcopyrite and galena, samples in this area up to Sb 1.95 %, Cu 3.37 %, Ag 939 g/t
- Outcrops along the main highway at point 712700E/5008415N
- Potassic alteration along low angle quartz vein at point 712596E/5008396N





Little Lepreau Hematite Rich Vein



Shadow Lake 2nd Pit Magnetite Rich Intrusive



Shadow Lake Prince of Wales Exit Massive Specularite Hematite

- Iron oxide copper-gold (IOCG) deposits (Hitzman et al., 1992) are a diverse family of mineral deposits characterized by abundant magnetite and/or hematite.
- There is both hematite rich and magnetite rich zones observed at Little Lepreau and at Prince of Wales.
- Along this 13.5km mineralized structure there are multiple outcrops clearly demonstrating an iron rich system. Hematite is present within the stockwork veins while magnetite is associated with the granite and granodioritic intrusions.

- Like other major IOCG systems, preferential mineralization deposition is occurring along the contact zones of faulted boundaries between crustal blocks. Fluid flow appears to be structurally controlled and enhanced by these crustal scale shear/fault structures. It is believed that the underlying earlier rift basins and the formation of shear/faults during the docking of the Meguma terrane produced a high temperature melt environment.
- The underlying pre-existing basinal structures and second-order cross structures has localized deformation, both brittle and ductal, and facilitated fluid and mineral migration during both mylonitic and brecciation (at higher crustal levels) stages of host rocks. Mineralized fluids infilling spaces allowing for the capture of high-grade copper, gold and silver.



17.6% Grey Copper Infilling Breccia



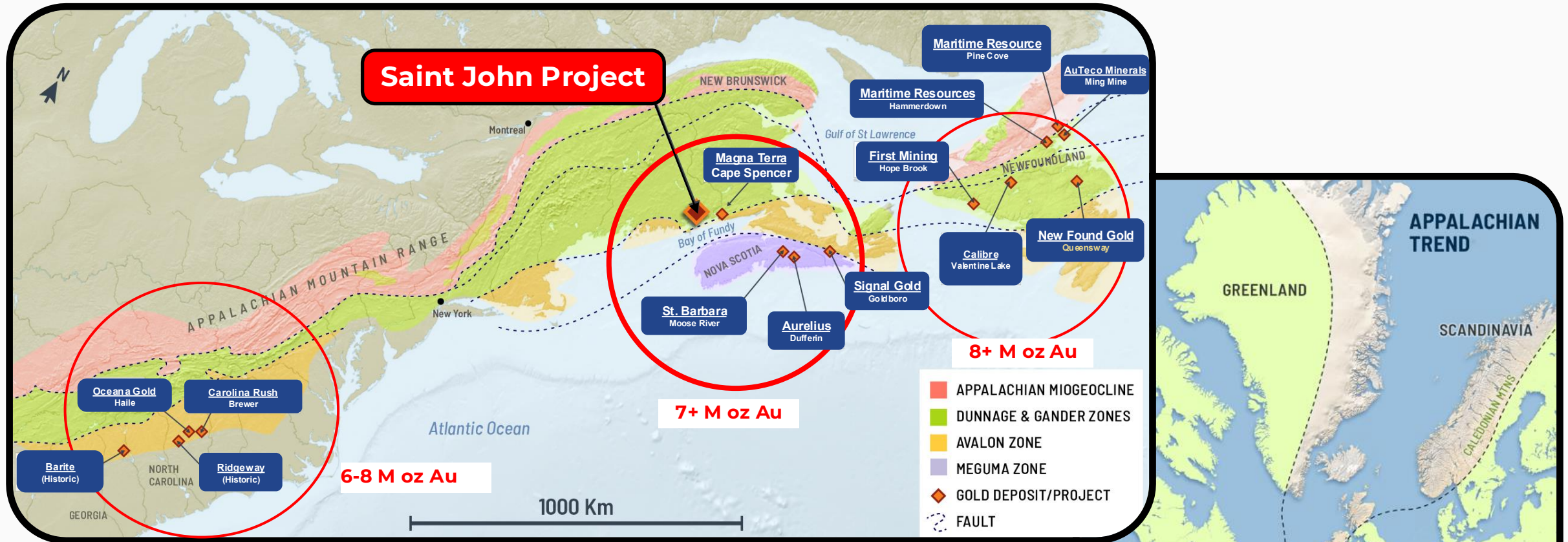
Meter Wide Exposure of Geological Contact with 1% plus Cu, 0.2% Mo and 4g/t Re



100m Long Trench with 2.1% to 6.7% Copper.

St. John Project – Evolving Appalachian, Continental Scale Gold Trend

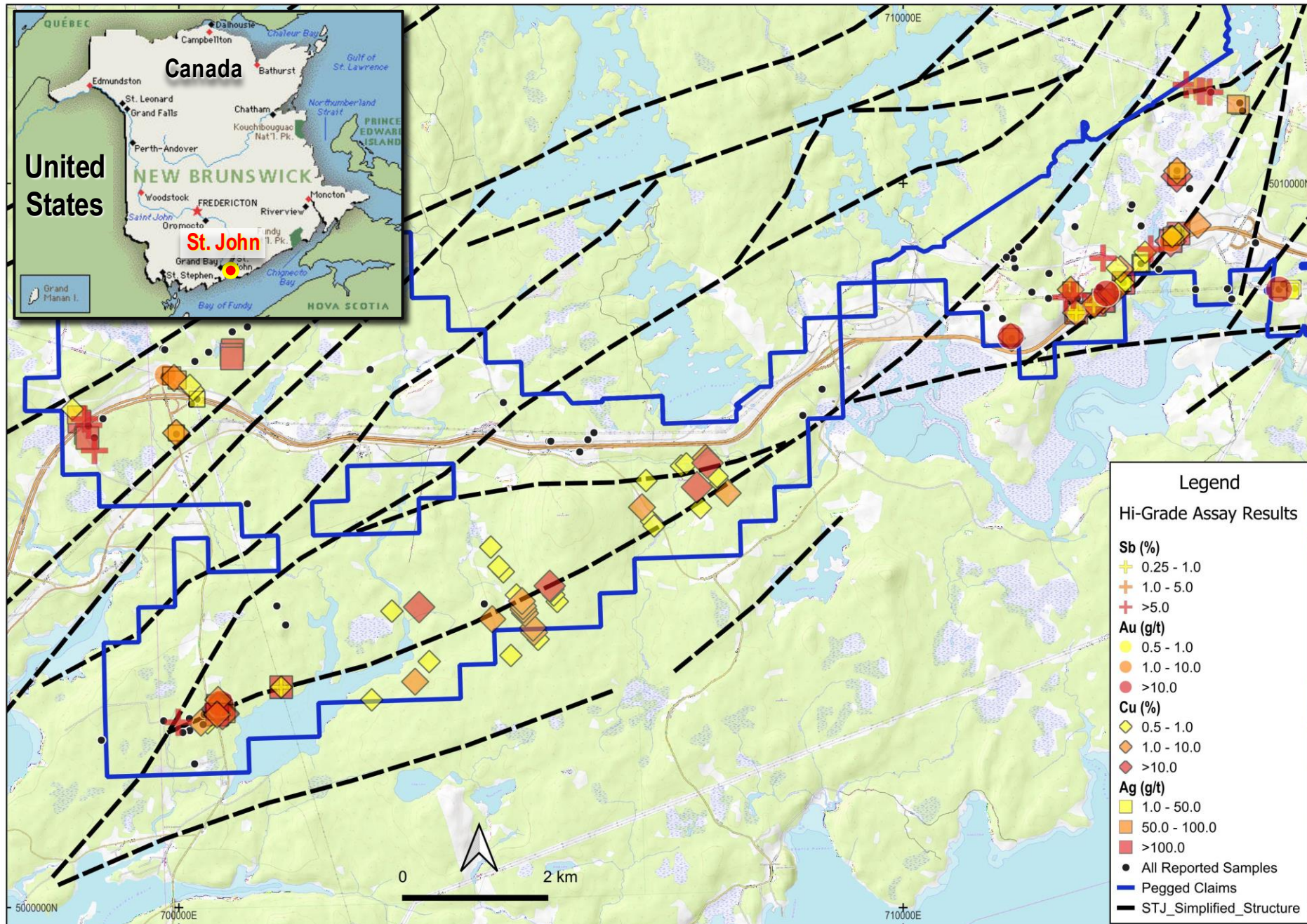
TSX-V: AIS
OTCQB: AISSF
FRA: 5YH



- Major gold deposits in the Appalachian's are closely related to deep-seated faults intimately associated with major geological terrain boundaries – analogous to the Victoria Gold Belt in Australia
- Galway's Clarence Stream, New Found Gold's Queensway in Newfoundland, & Agnico Eagle's Fosterville in Victoria, Australia share similar ages, structural features, lithology & mineralogy

New Gold Region – Simplified Structural & Mineralized Trends

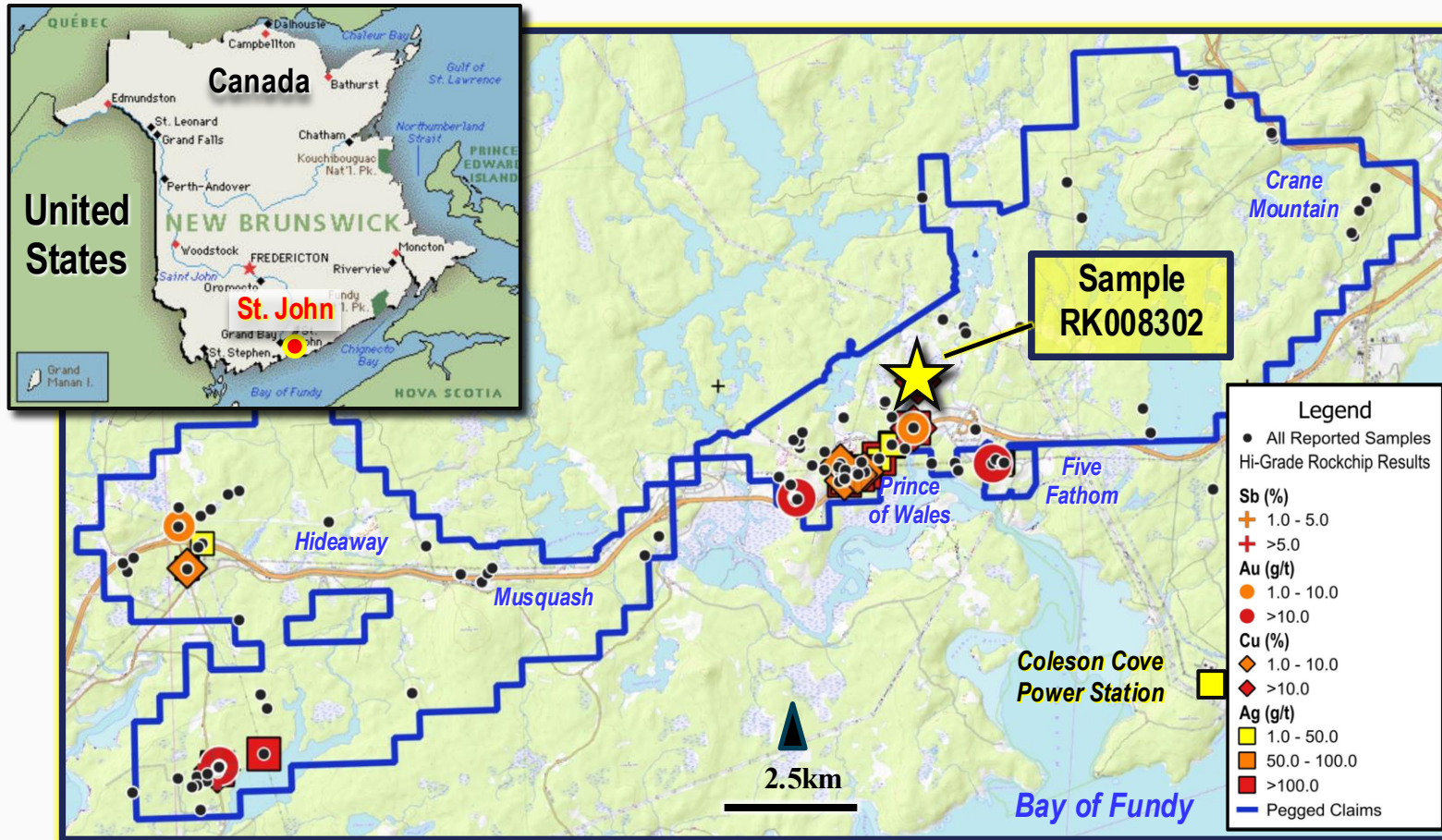
TSX-V: AIS
OTCQB: AISSF
FRA: 5YH



- The map illustrates all the hi-grade surface assay results to date
- It shows a clear mineralized trend coincident with major interpreted structural features
- Are these structural features the dominant control on mineralization?
- There are large areas along these structural features that remain untested

New Gold Region – High Chargeability, Low Resistivity Sulphide Sample

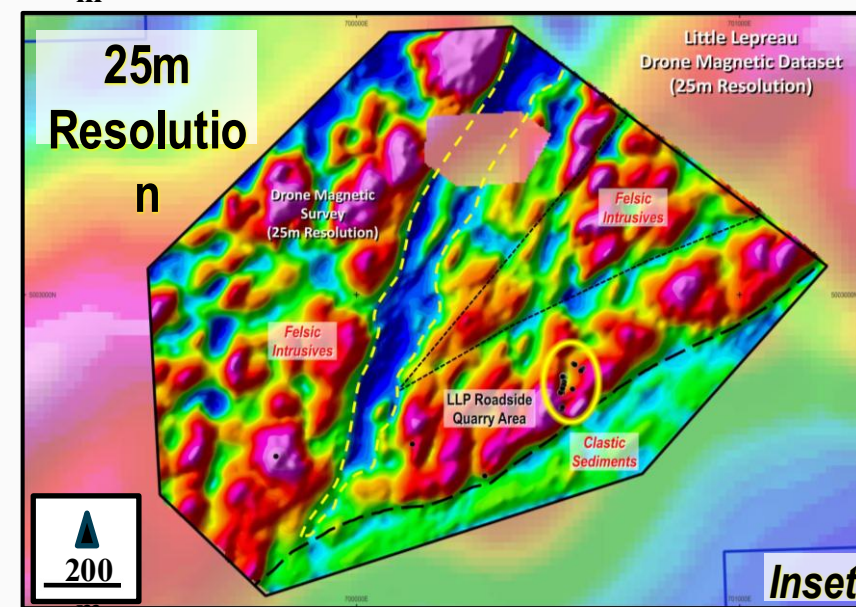
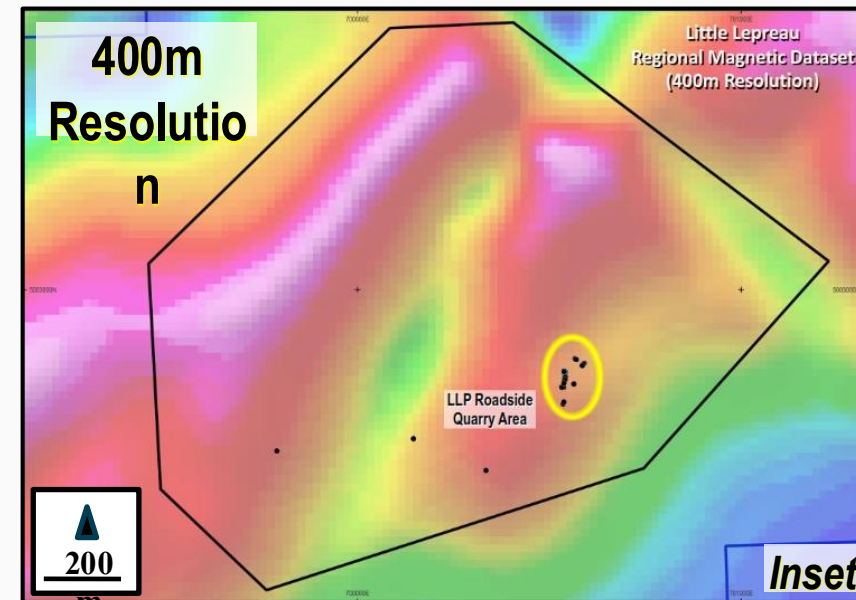
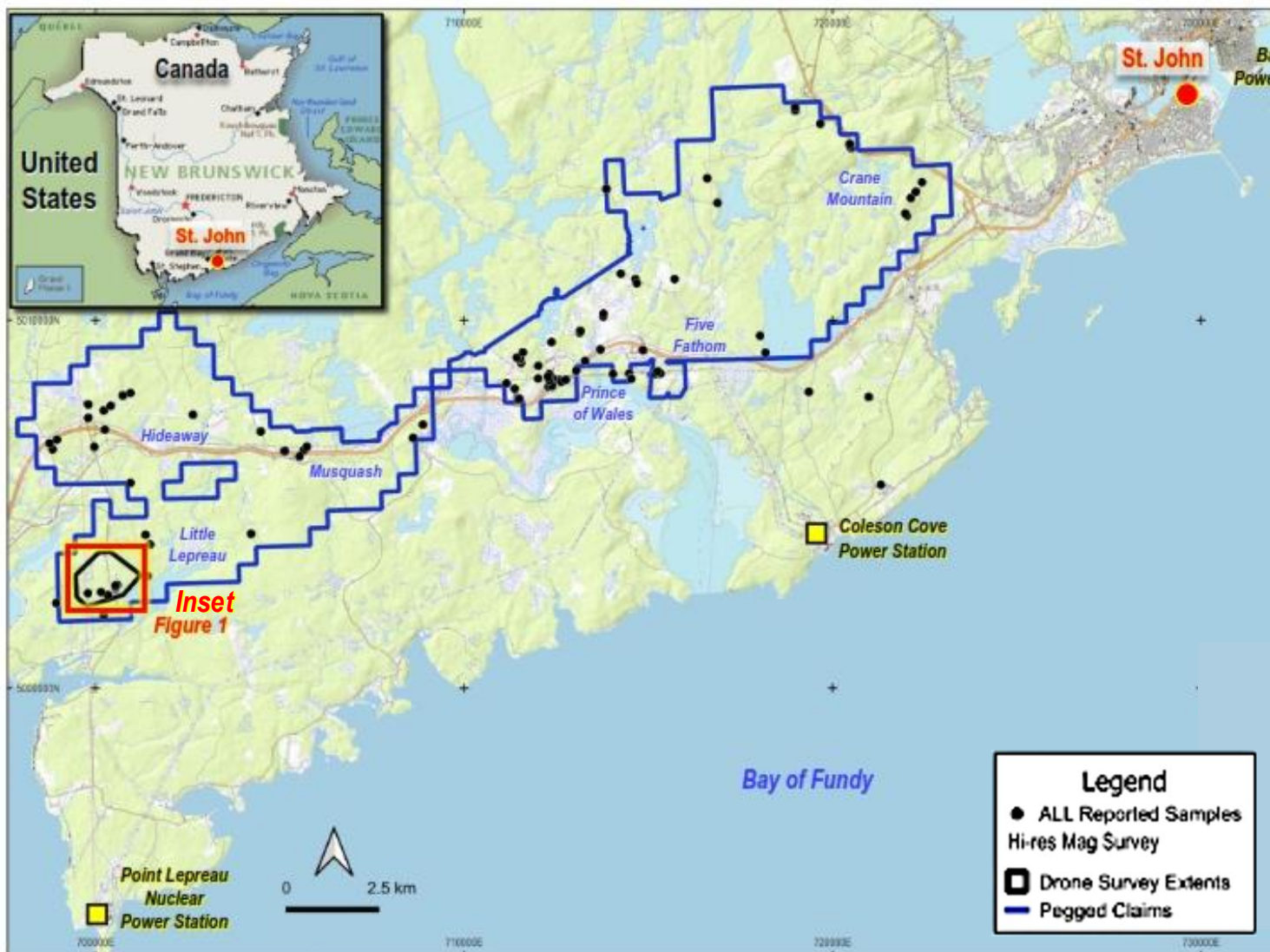
TSX-V: AIS
OTCQB: AISSF
FRA: 5YH



Sample RK008302
(10.15% Cu, 65.8g/t Ag)

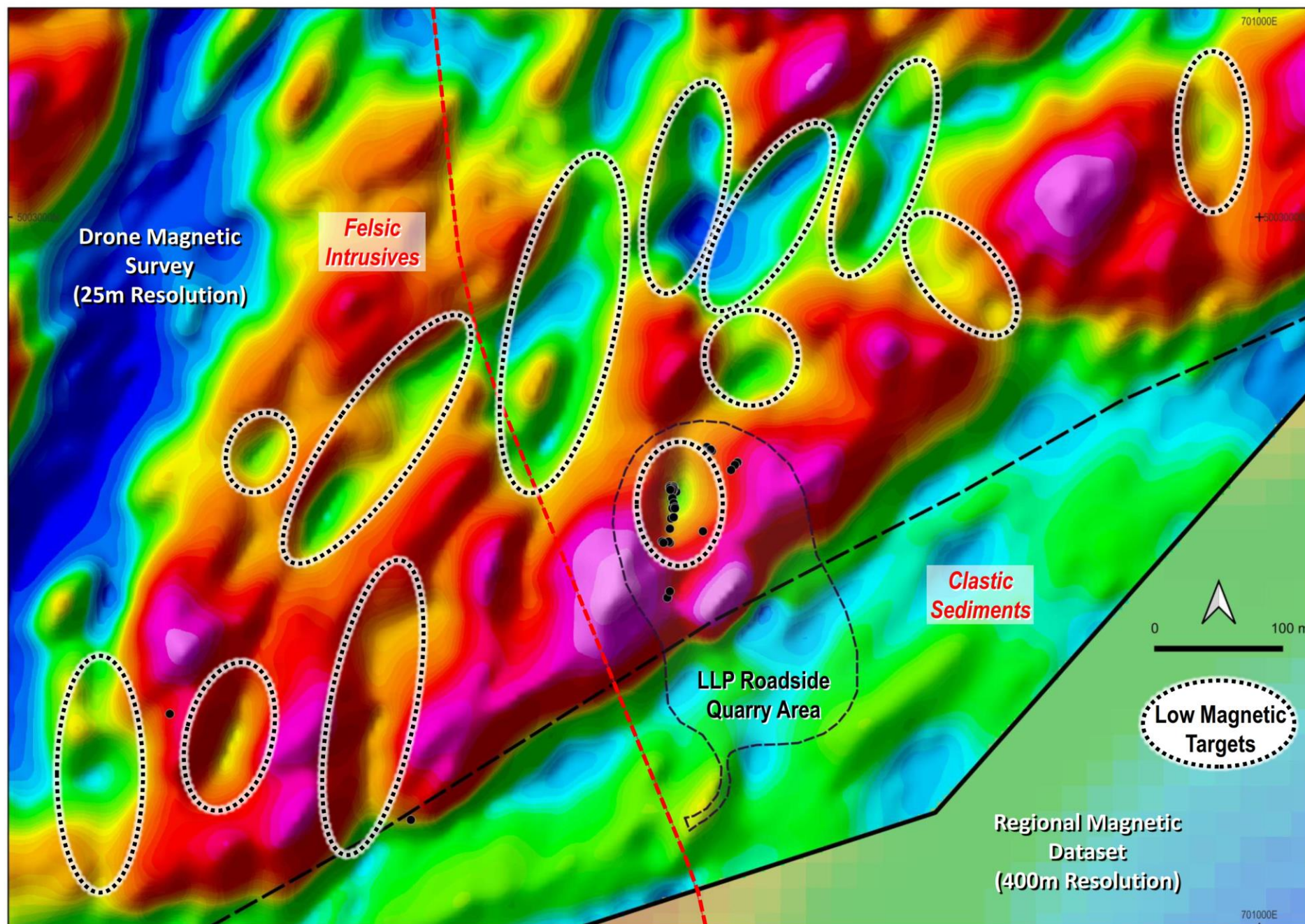
- Testing shows the copper mineralization at Saint John in Canada from Prince of Wales Prospect sulphide sample RK008302 (10.15% Cu, 65.8g/t Ag):
- Very high IP/chargeability values in the range 210 to 220 mSec
- Low resistivity values also confirmed ~1-4 S/m (inductive conductivity)
- **Drone MobileMT (MMT) therefore deemed appropriate for the project and could quickly assist with defining new targets and prioritizing existing targets**

Acquired over Little Lepreau Prospect



The magnetic data received from the high resolution 25 metre line spaced survey has delineated multiple magnetic low response areas that bear a similar magnetic signature to the Little Lepreau Roadside Quarry mineralization

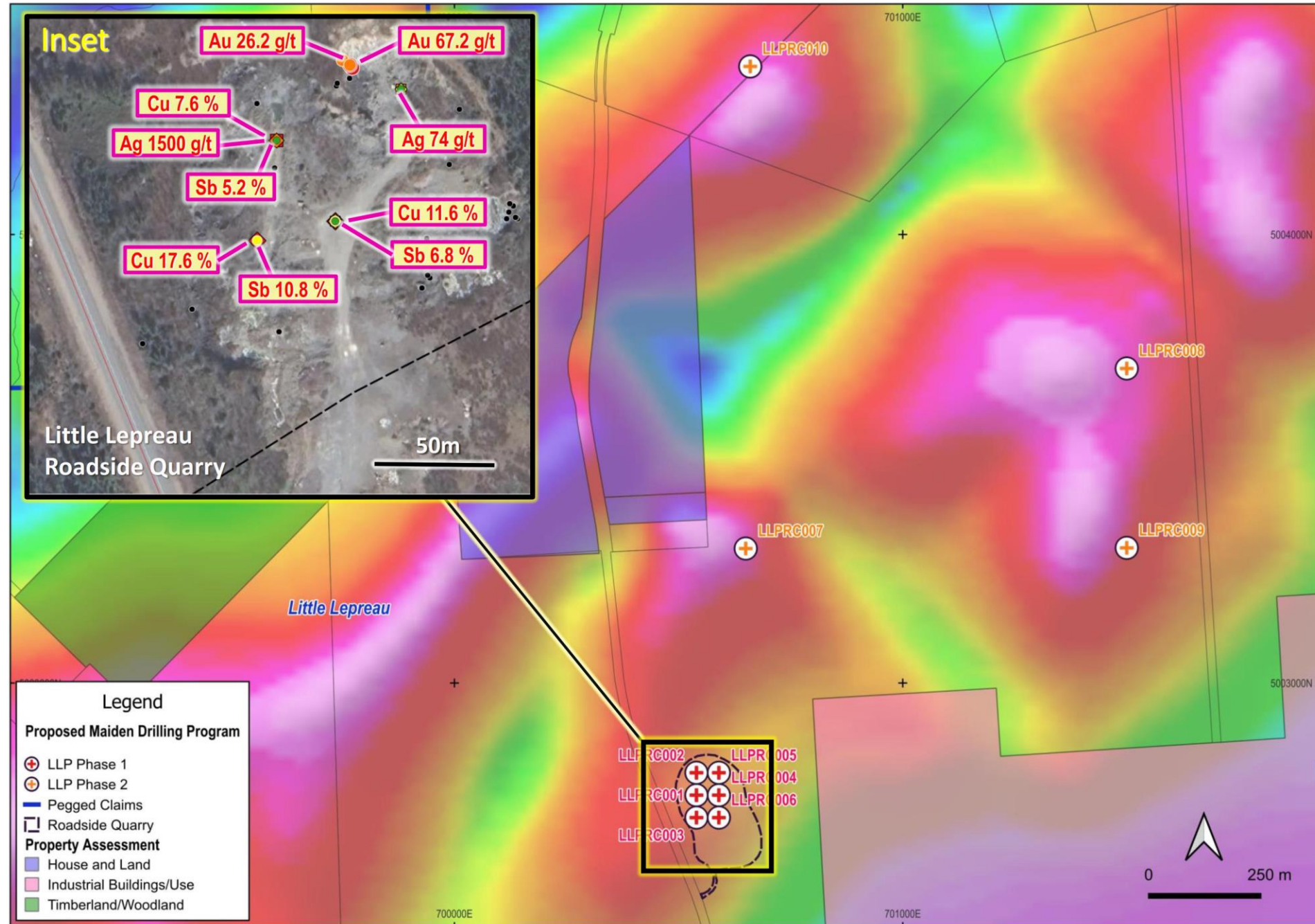
- The Little Lepreau Roadside Quarry area is situated within an interpreted magnetic low, thought to be associated with the alteration of the intrusives.
- Multiple magnetic lows and apparent structures cover the survey area with magnetic signatures similar to the roadside quarry area.
- Is proximity to the intrusive boundary or SE bounding fault important for fluid (mineralization) delivery?



St. John Project – Maiden Drilling Program Approved at Little Lepreau

TSX-V: AIS
 OTCQB: AISSF
 FRA: 5YH

- **Phase 1**
 6 RC holes for
 ~1,200m
- **Phase 2**
 4 RC holes for
 ~800m
- Approved Jan 2025



Project Highlights & Advantages

- Along a major interstate/international highway
- Exploration & mine friendly environment
- Immediately west of Saint John city with large airport
- 20 km from nuclear power plant
- Proven mineralization outcropping in area
- Disjointed previous exploration due to till cover and ownership
- Current ownership is by one holder and is straight forward
- Sample grades to date are high and would be considered mineable
- Numerous felsic intrusive and extrusive units in area
- Strong structural controls on identified mineralization
- Combined with multi-element character of mineralization Au/Cu +/- Sb, Pb, Ag – probable IOCG style
- Numerous attractive points for investors: location, Au, Cu, Sb
- Mineralization spread over >40km including areas outside project
- Indicates large scale mineralizing event and system present in region

Going Forward

- Every roadside cutting or quarry for aggregate has some mineralization of antimony, copper, silver and gold. The roadside cuttings and quarries are random and not selected on geology. What it does show is that there is economic grades of mineralization, supported by excellent assay results and we want to find the widest areas to drill first.
- Ideally before drilling, we want to investigate the surrounding rocks using geophysics to define the best locations to drill.
- Drilling has been approved at Little Lepreau, and this has highlighted the simplicity for approvals.

Exploration Budget

- **\$100K** Drone magnetics over the Little Lepreau area has worked well and expand this over the entire project area.
- **\$150K** Drone MMT will also assist in locating the best drill areas to cover Little Lepreau and Prince of Wales Prospects.
- **\$50K** IP survey also to better refine targets.
- **Total of \$300k** on geophysics. Defining magnetics, chargeability and resistivity to better define drill targets.

Low Cost Exploration

- Drilling rates from a Saint John Diamond Drilling company, which are between at \$145-155 all in cost per metre, HQ. – i.e. 500m = \$77.5K
- Assay ALS Muncton – \$65/sample
- Geologist from Saint John – \$800/day





MANAGEMENT
Experienced Development Team
and Share Structure

Martyn Element – Chairman

- Founder & President, **Element and Associates**, focused on global business ventures
- **30+ years** in capital markets and corporate development
- Proven success advising / marketing emerging companies
- Extensive **network of investors and strategic partners**
- Skilled in identifying opportunities and developing growth

Marc Enright-Morin – CEO

- **25+ years** in public and private capital markets
- Raised over **\$300M** for start-ups & junior companies
- Strong international network across **Europe, Asia, and North America**
- Held senior roles as **CEO, President, and Director** in multiple firms
- Expertise in **venture financing & corporate growth**

Kiki Smith – CFO & Director

- **20+ years** finance, accounting public & private companies
- Experience with **mining, oil & gas, real estate, technology**
- Specialist in **M&A, financial reporting, and compliance**
- **CPA (BC)** and UBC Economics graduate
- Focused on financial discipline and strategic growth

Afzaal Pirzada, M.Sc, P.Geo. – VP Exploration

- Professional geoscientist with **over 30 years' experience** in mineral exploration and mining with expertise in gold, lithium, rare metals, graphite, PGE and uranium.
- **Managed multiple exploration projects** in various jurisdictions across Canada, USA and internationally.
- Registered as professional geoscientist with the Association of Professional Engineers and Geoscientists of BC
- Authored NI 43-101 Reports, is a “Qualified Person” person on mineral exploration projects

Muhammad Memon – Director

- **15 years** in financial management & corporate compliance
- Expertise in **reporting, forecasting, and financing** for public companies
- Background in **mining, investment, & technology sectors**
- Member of **CPA Canada** and **Fellow of ACCA (UK)**
- Experienced in governance, risk, & stakeholder relations

Public Company Details

Trading Symbols:

- Canada – TSX Venture Exchange
TSX-V: AIS
- United States – OTC PINK: AISSF
- CUSIP Number: 001431105
- ISN Number: CA0014311058
- Audited Financials: Year End March 31.

Shares Outstanding

- As of February 28, 2026
- – 34,832,513 Shares
- – 1,838,417 Warrants
- – 790,000 Options
- – 37,460,930 Fully Diluted

Company Directors & Management

- Martyn Element, Chairman
- Marc Enright-Morin, CEO
- Kiki Smith, Chief Financial Officer
- Afzaal Pirzada, VP Exploration
- Muhammad Memon, Director



A.I.S. Resources Limited

1120 – 789 West Pender Street
Vancouver BC V6C 1H2
Canada

T: +1-604-687-6820

A.I.S. Resources listed on:
TSX.V: AIS | OTCQB: AISSF

www.aisresources.com

For corporate information, please contact:

Martyn Element
Chairman

M: +1-604-220-6266

E: melement@aisresources.com

Marc Enright-Morin
President & CEO

M: +1-778-892-5455

E: marc@aisresources.com